

Windows XP Operating System Installation

[This tutorial was created in Microsoft Word 2003 by Phillip Seager, Seager Enterprises on September 18, 2007. It was created on a Windows XP machine in Windows Classic Mode]

Windows XP operating system installation requires the use of the original system disk that came with your computer system. In CD form, it contains all of the necessary files to make a complete installation of your operating system. Although there are 3 types of installation – Recovery, Repair and Full, in this tutorial we will concentrate on just the FULL install.

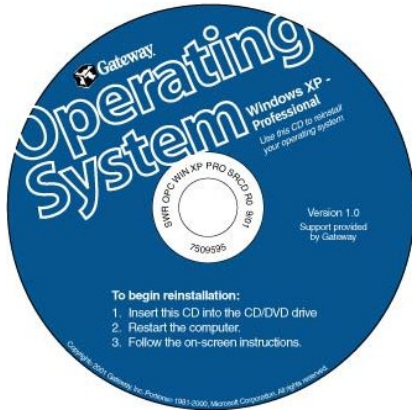
What follows here is a replication of an actual installation. It is presented in 5 Phases.

[Note: When using the Table of Contents and other areas that are underlined, hold down the CTRL key located at the far left and bottom of your keyboard and then with your mouse \(you will notice that the arrow changes to a hand\) you can then navigate or go to any section you choose by clicking with the left-mouse button. The same is true when you finish a section, you can use the same action to click on RETURN TO TOP and it will take you back to the beginning of the tutorial.](#)

Table of Contents

Installation – Phase 1	2
Licensing Agreement	3
Partitioning	3
File System	4
Copying of Setup Files	6
Installation – Phase 2	7
Language	7
Personalization.....	8
Enter the Product Key	8
XP Professional Network Screen	9
Date & Time Settings	9
Network Settings	10
Display Settings Adjustment	11
Finalizing Setup – Phase 3	12
Windows Welcome Screen	12
Optional Registration.....	12
User Screen	13
Customizing the Windows Desktop – Phase 4	14
Classic Mode vs. XP Mode	14
Service Pack 2 – Phase 5.....	15
Confirm Service Pack 2.....	15
Windows Security Center.....	16

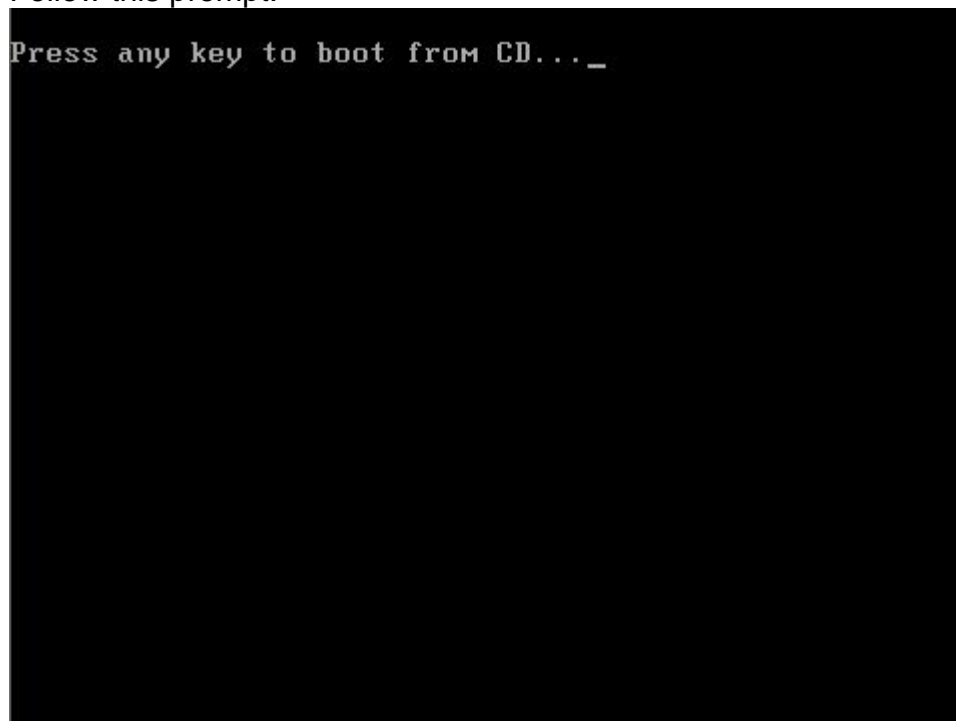
To accomplish the FULL (or Clean) installation Procedure you must have the Windows CDROM Installation Disk.



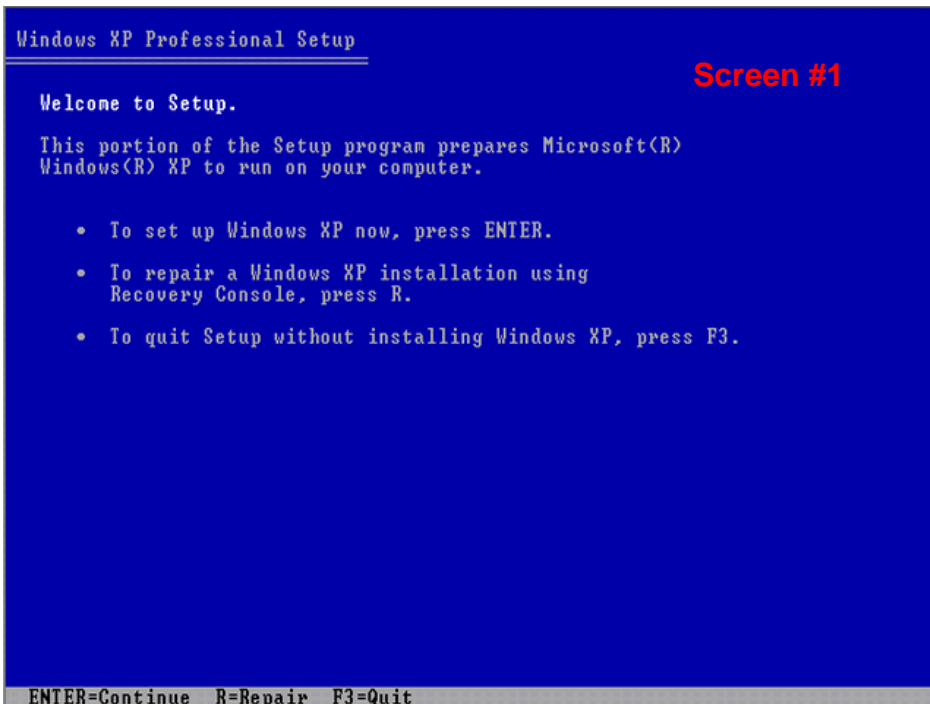
Installation – Phase 1

To start the installation, you first must put your CD into your CDROM drive and shut off your computer. Restart the computer. The computer will then boot to your CD to start the install process.

Follow this prompt:



This screen will come up:

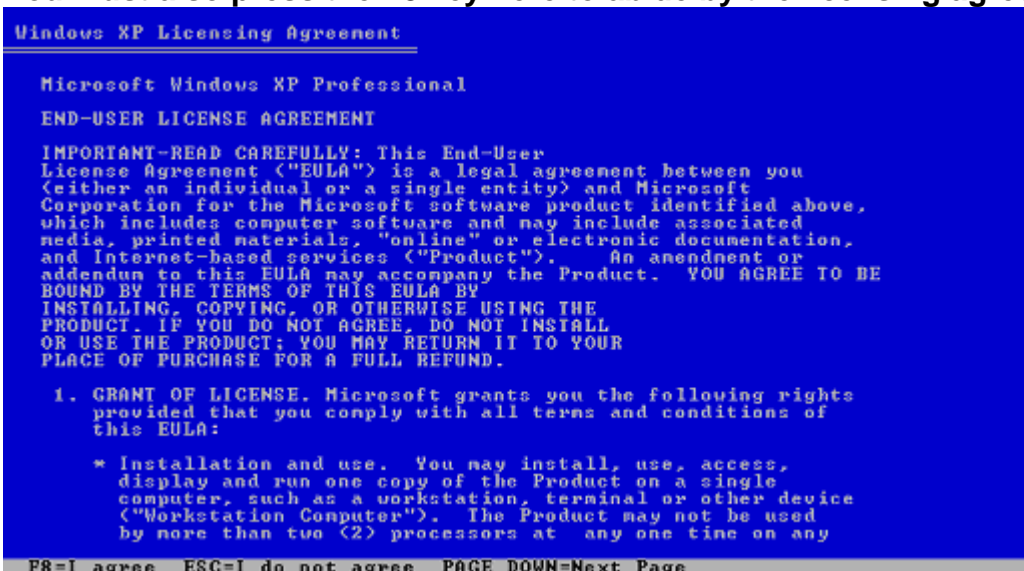


When choices are presented: “To setup Windows XP now”, press ENTER to continue.

In Full Installation, you will format the hard drive and lose all previously saved programs and documents.

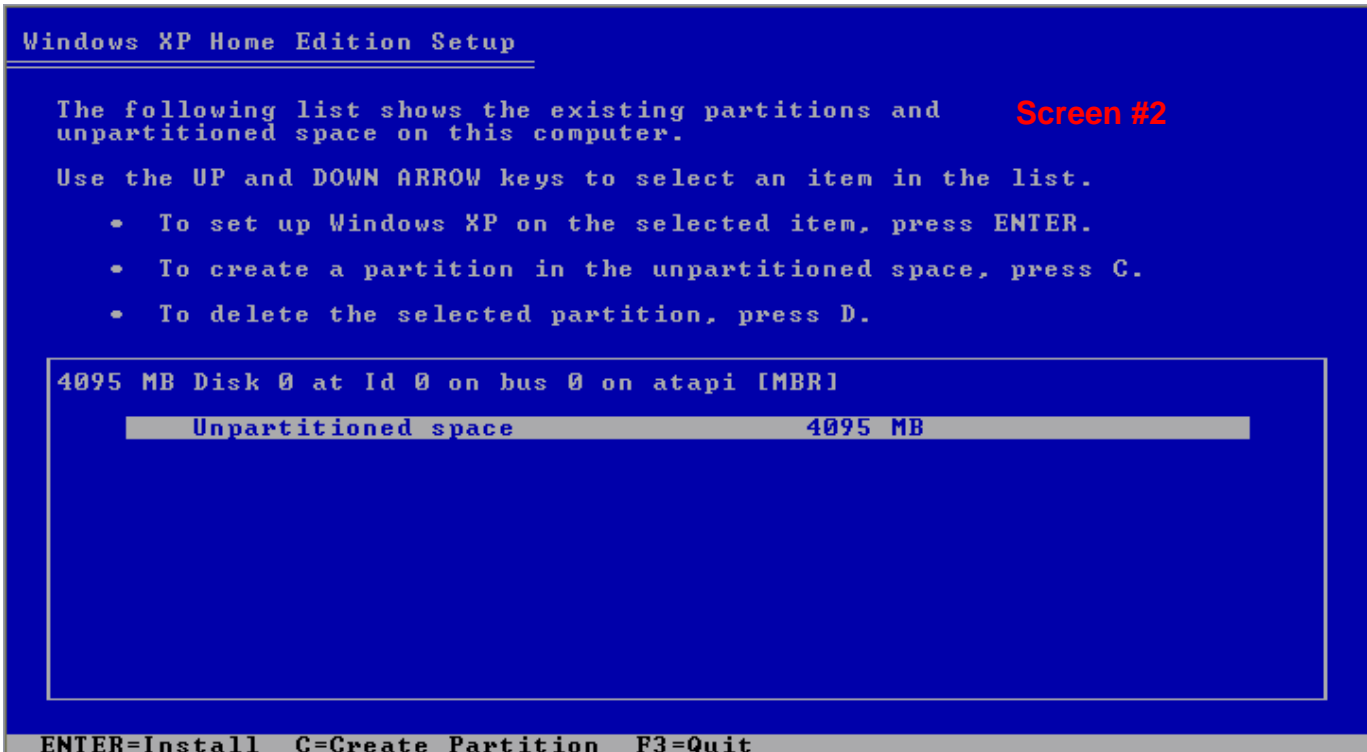
Licensing Agreement

You must also press the F8 key here to abide by the licensing agreement



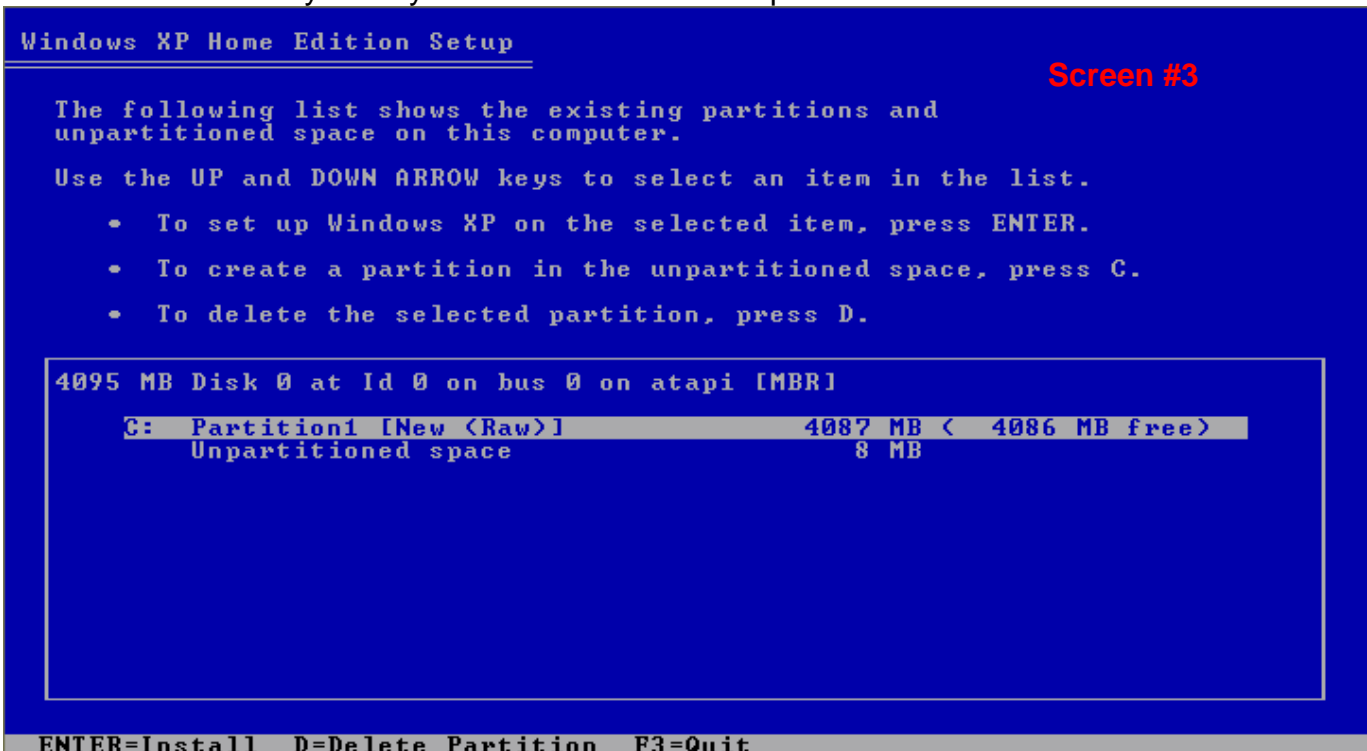
Since Windows is usually installed on the C: Drive the first thing to do is “To delete the selected partition. Use your arrow key to select C: Drive, then press the letter D on your keyboard. If it asks you to confirm, do so. Then the screen will appear as it does below.

Partitioning



On this next screen, use your arrow keys to highlight C:

Press the letter C on your keyboard to create the new partition.



The screen below will appear.

File System

Confirm which File System to use. Home Users should use NTFS. Don't choose QUICK!!

Windows XP Home Edition Setup

Screen #4

The partition you selected is not formatted. Setup will now format the partition.

Use the UP and DOWN ARROW keys to select the file system you want, and then press ENTER.

If you want to select a different partition for Windows XP, press ESC.

Format the partition using the NTFS file system <Quick>
Format the partition using the FAT file system <Quick>
Format the partition using the NTFS file system
Format the partition using the FAT file system

ENTER=Continue ESC=Cancel

Windows informs you that all the data will be erased and asks you for a confirmation (choose YES) and then proceed with the full format.

Windows XP Home Edition Setup

Screen #5

Please wait while Setup formats the partition

C: Partition1 [New <Raw>] 4087 MB (4086 MB free)
on 4095 MB Disk 0 at Id 0 on bus 0 on atapi [MBR].

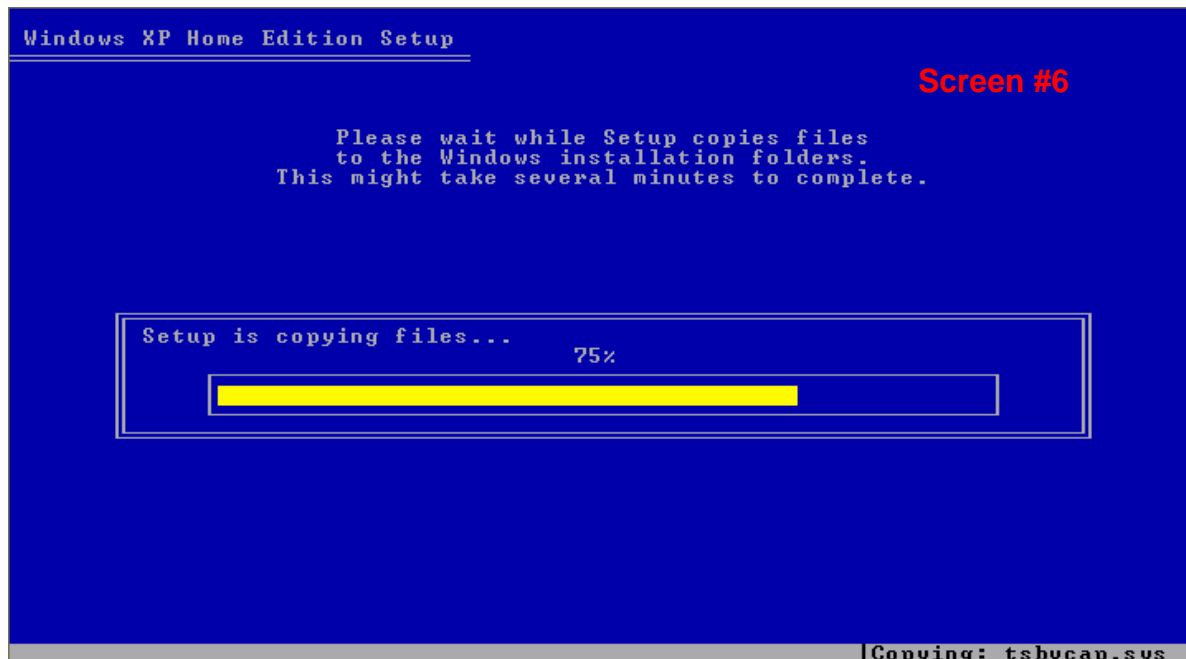
Setup is formatting...

73%

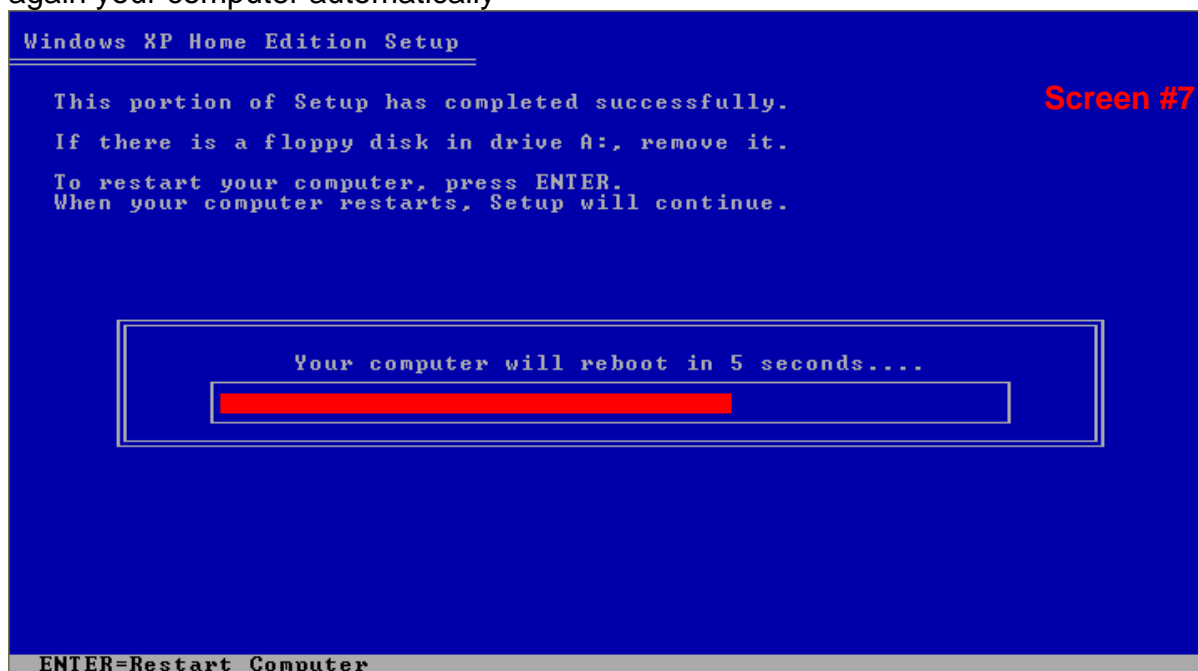


Once it has finished formatting, Windows will automatically copy from your hard disk the files necessary to the installation.

Copying of Setup Files



Once the files necessary to the installation will be copied from your hard disk, Windows will start again your computer automatically

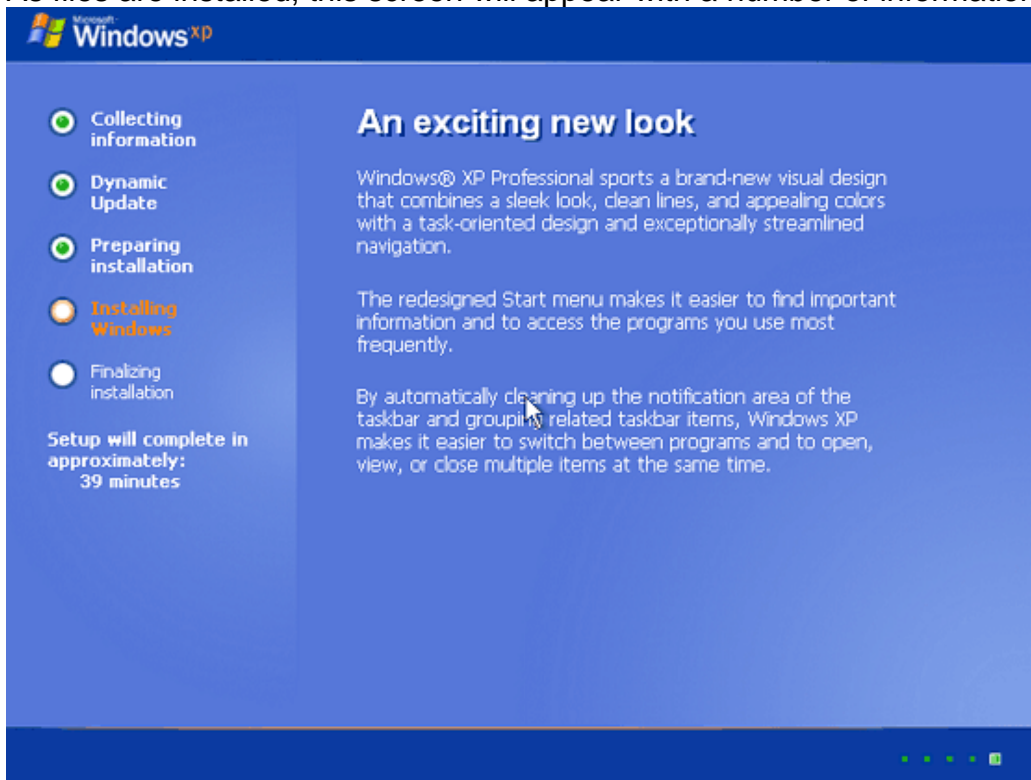


The installation of Windows continues automatically, taking from 30 – 40 minutes to complete.

[RETURN TO TOP](#)

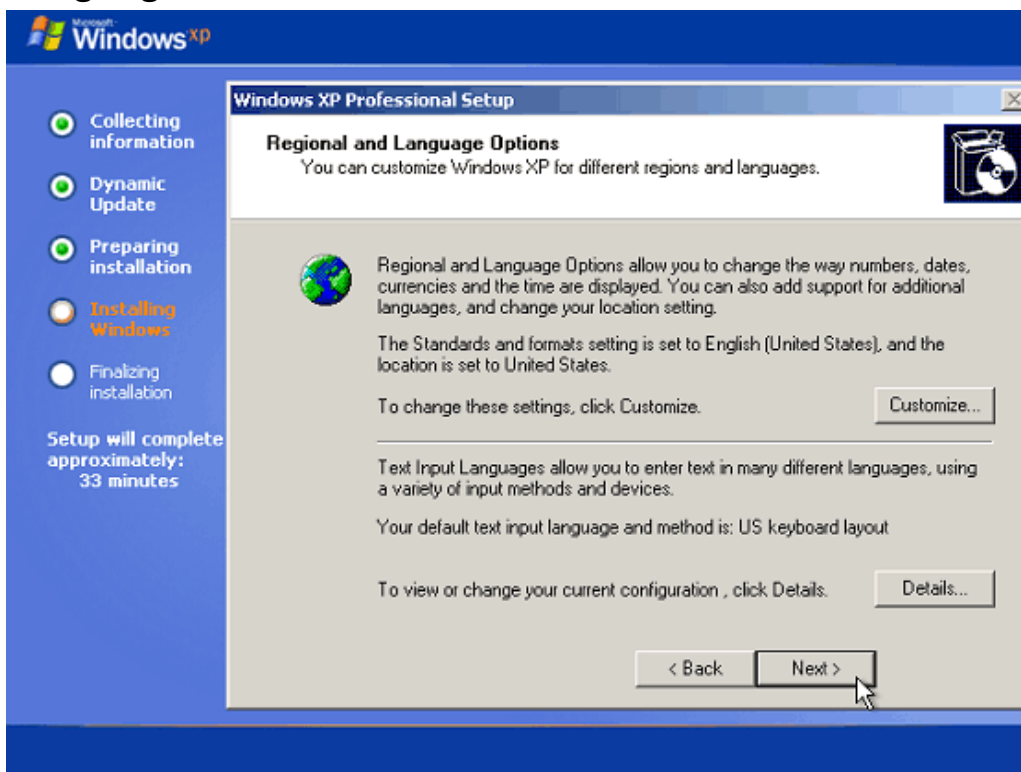
Installation – Phase 2

As files are installed, this screen will appear with a number of information screens

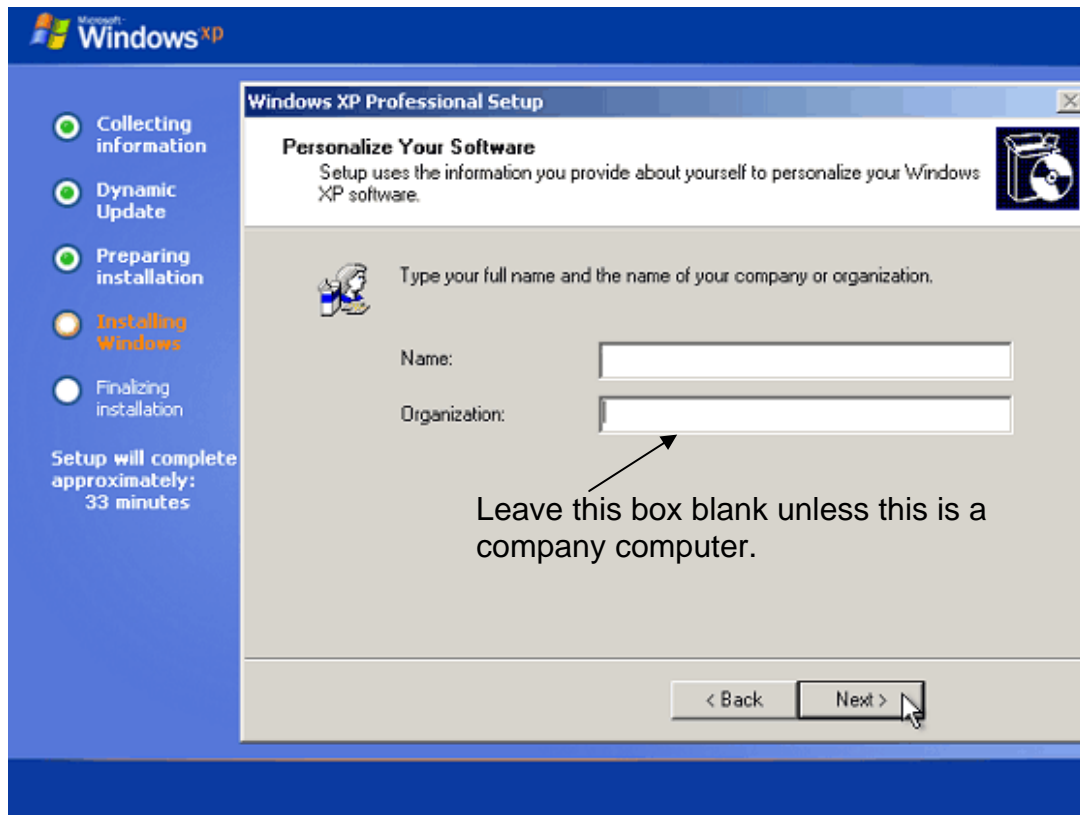


The screens take you through a series of prompts that will include the following:

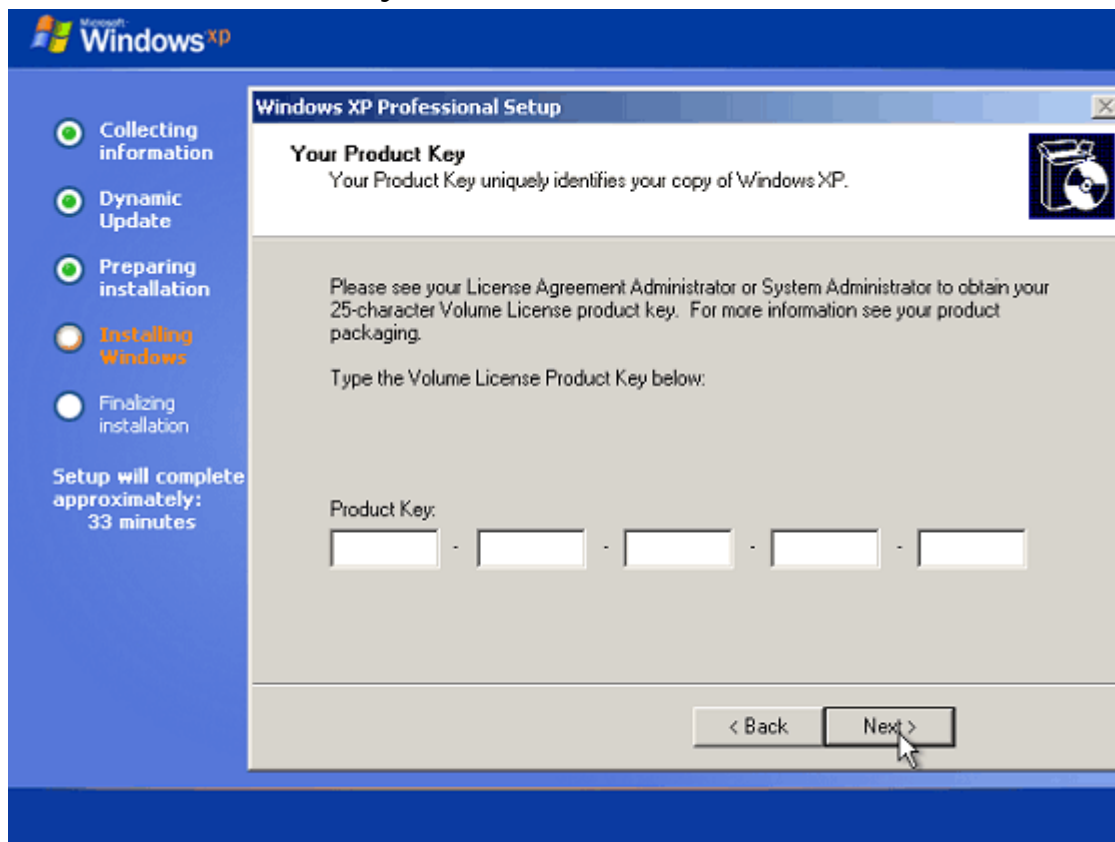
Language



Personalization



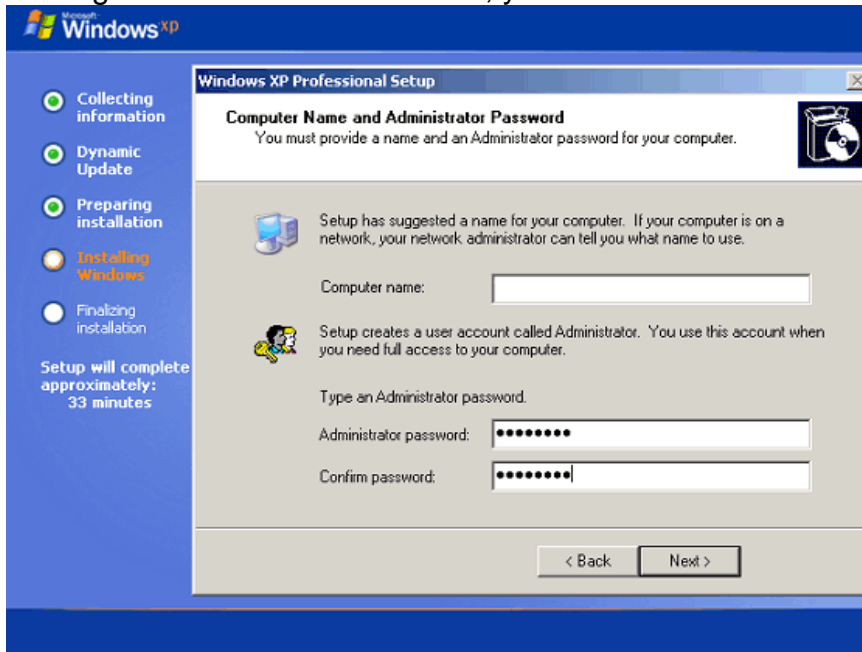
Enter the Product Key



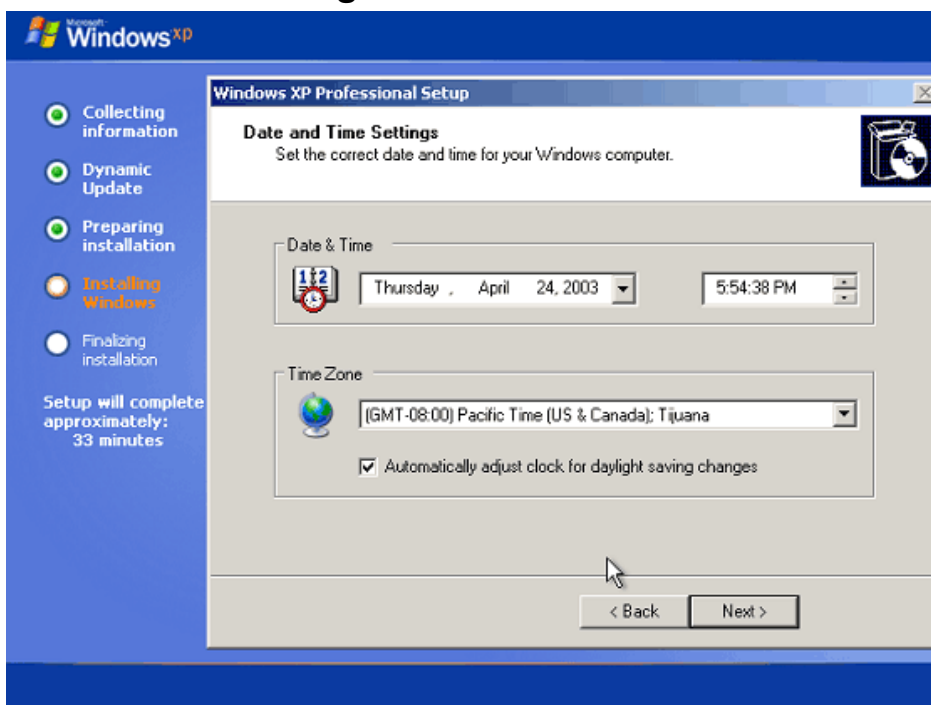
You will need to supply a 25 letter/digit code that came with your installation CDROM and you will need to copy it into the appropriate boxes.
The Product key can either be found in the CD documentation or on a tag somewhere on your computer.

XP Professional Network Screen

If using Windows XP Professional, you will see this screen

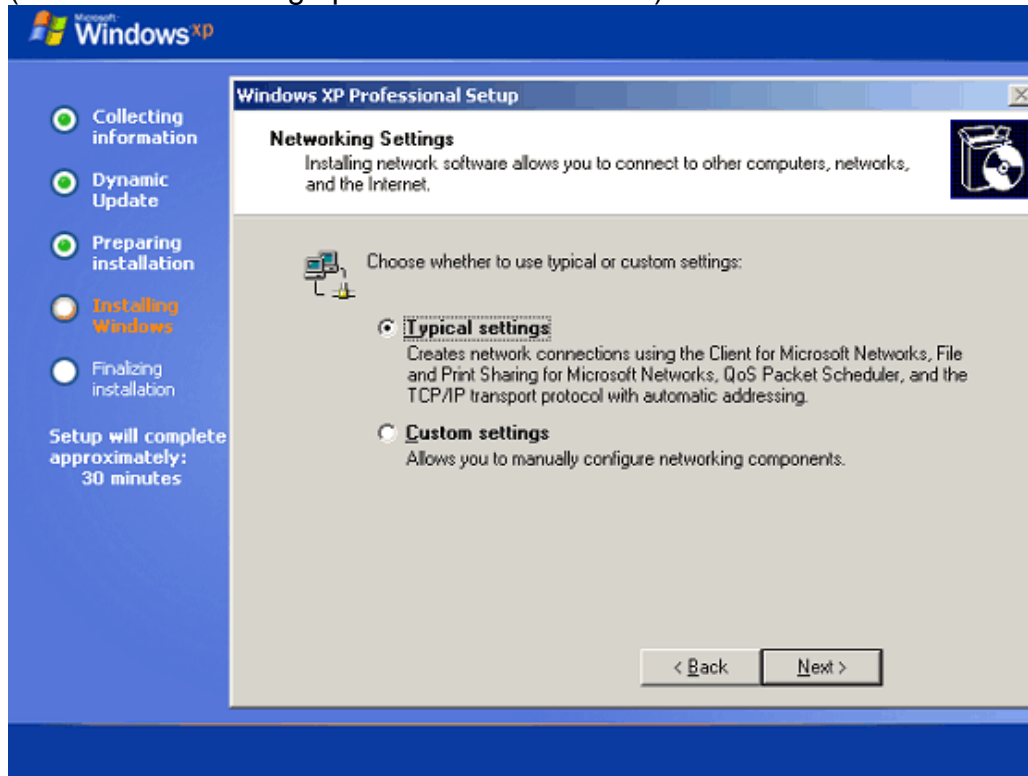


Date & Time Settings



Network Settings

(also used for setting up Internet Connections)

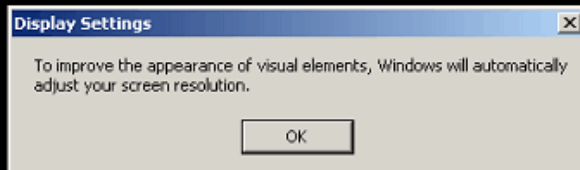


The machine will finish the install process and reboot the machine bring this startup screen with the XP logo:



Display Settings Adjustment

Click on OK to
continue



[RETURN TO TOP](#)

Finalizing Setup – Phase 3

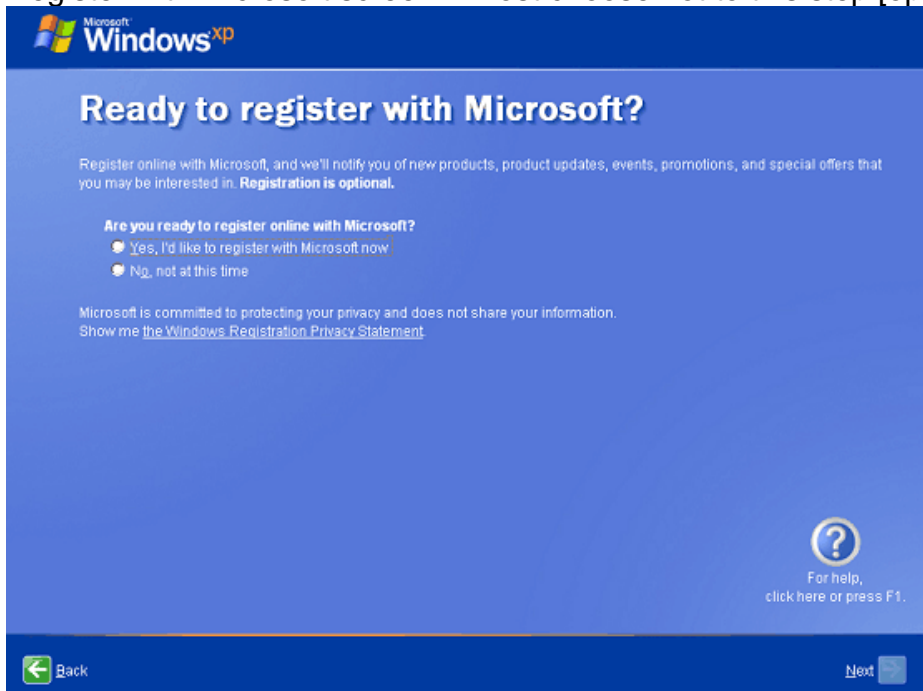
Windows Welcome Screen

Welcome to Windows setup screen – Click on Next to continue



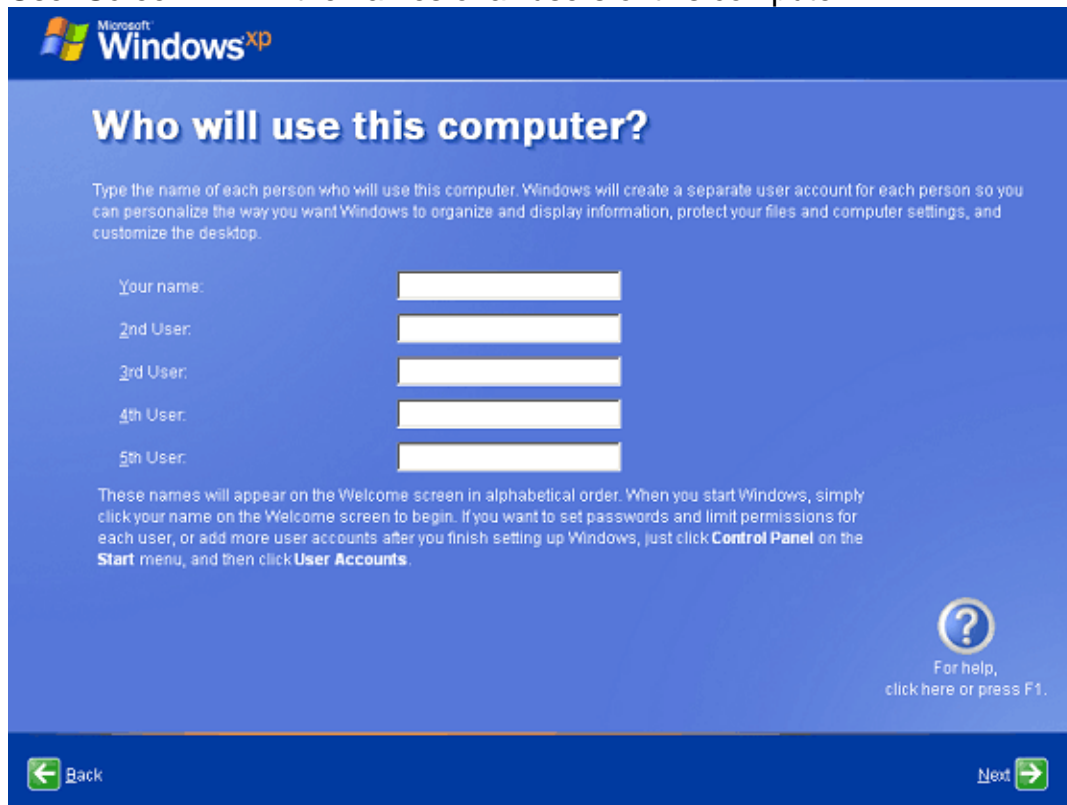
Optional Registration

Register with Microsoft screen – most choose not to this step [optional] – click on Next



User Screen

User Screen – fill in the names of all users of this computer



The screenshot shows the Windows XP installation screen titled "Who will use this computer?". At the top left is the Microsoft Windows XP logo. The main heading is "Who will use this computer?". Below this, a paragraph explains that Windows will create separate user accounts for each person to personalize the system. There are five input fields labeled "Your name:", "2nd User:", "3rd User:", "4th User:", and "5th User:". Below the fields, a paragraph explains that names will appear in alphabetical order and provides instructions on how to set passwords and permissions. In the bottom right corner, there is a help icon (a question mark in a circle) with the text "For help, click here or press F1." At the bottom left is a "Back" button with a left arrow, and at the bottom right is a "Next" button with a right arrow.

The Windows desktop or main screen follows. There will be a series of prompts asking you to continue to personalize your desktop.

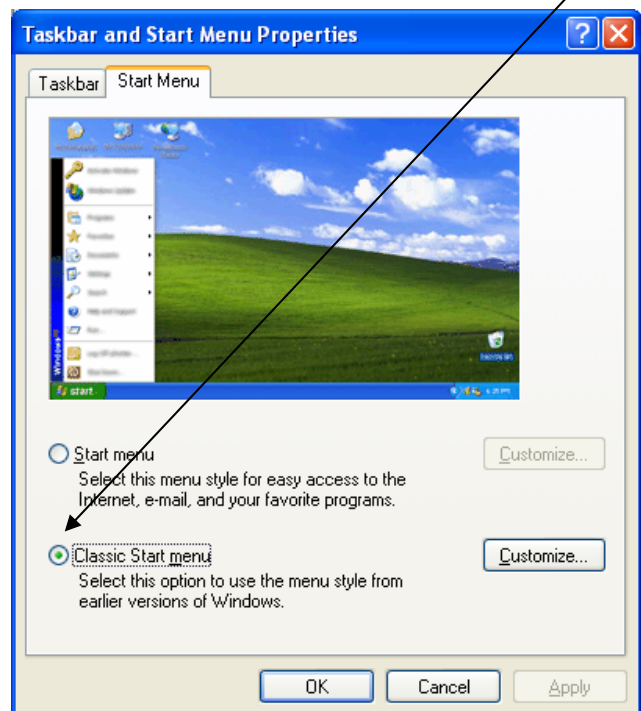
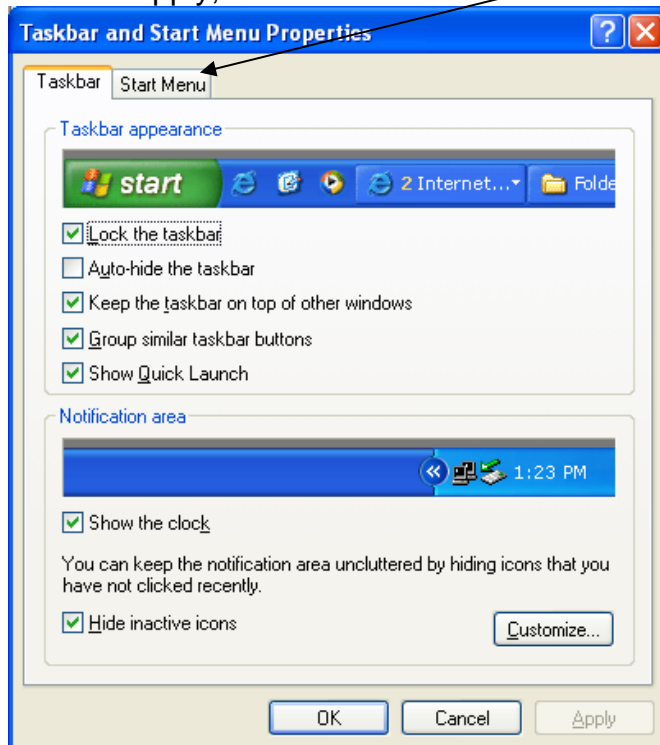
[RETURN TO TOP](#)

Customizing the Windows Desktop – Phase 4

Classic Mode vs. XP Mode



To switch to the Windows Classic Mode, right-click with your mouse on the BLUE bar above and choose Properties. Now click on the Start Menu and then click in the circle "Classic Start Menu". Click on Apply, then OK.

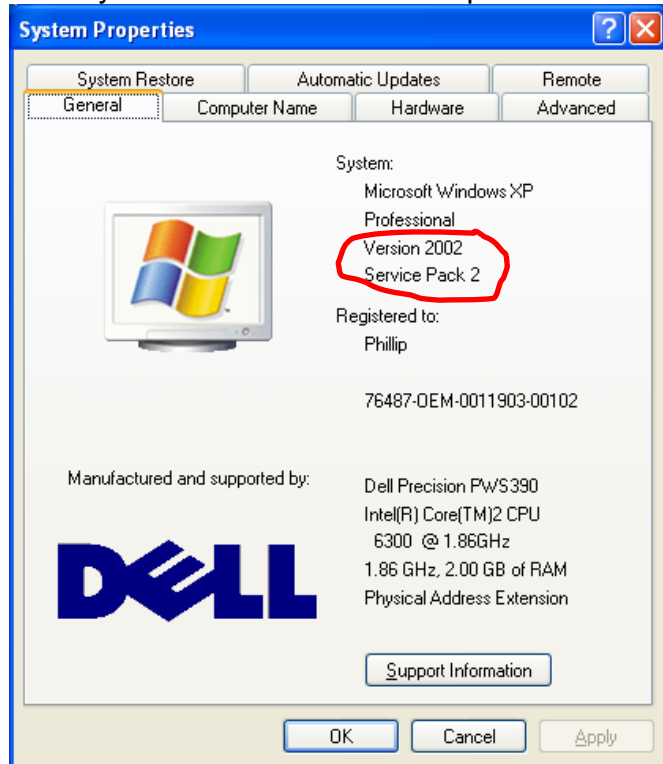


[RETURN TO TOP](#)

Service Pack 2 – Phase 5

Confirm Service Pack 2

Once the Setup is complete, find the icon either on the desktop that says My Computer and right-click on it and then left-click on Properties. Look on the General tab to see if it says Windows Service Pack 2 is part of the information. Most CDROMs today that are system CD's already have Service Pack 2 as part of the installation procedure.



If you need to install Windows XP with Service Pack 2 then the install is simply a matter of starting the installation procedure either from a CD or from the updates that are automatically downloaded from Windows Update. Follow the prompts and continue the installation.

You will need to restart the computer when the installation is finished. With the new features that Service Pack 2 brings, you will come to another screen which will prompt you to **Turn On Automatic Updates** (This is Recommended).

Windows Security Center

One of the features that is installed is the Windows Security System which monitors the Windows Firewall [ON/OFF], Virus Protection [ON/OFF] & Automatic Updates, previously mentioned [ON/OFF]. Below is the Windows Security Screen:



END OF TUTORIAL